



KEY ENGINE for REAL-TIME OPERATION

KERO SOFTWARE offer future energy management solution through Intelligent Energy Management Platform

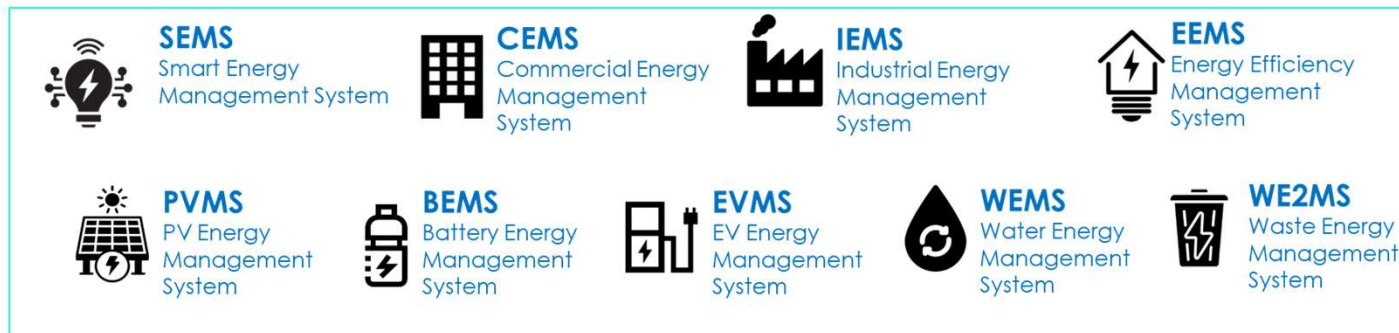
In the Fourth Industrial Evolution era, KERO Software can provide effective solutions to home buildings, factories and renewable energy through Smart City and Smart Grid infrastructures built with IoT, Cloud, Big Data and Mobile Technology.



KERO SOFTWARE business model and outcome

Energy + DX based Energy Platform Provide as EaaS and SaaS

The intelligent components of SaaS & D.N.A (Data.Network.Ai)

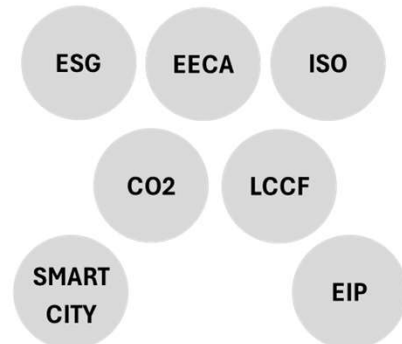


Compliment to Regulator System



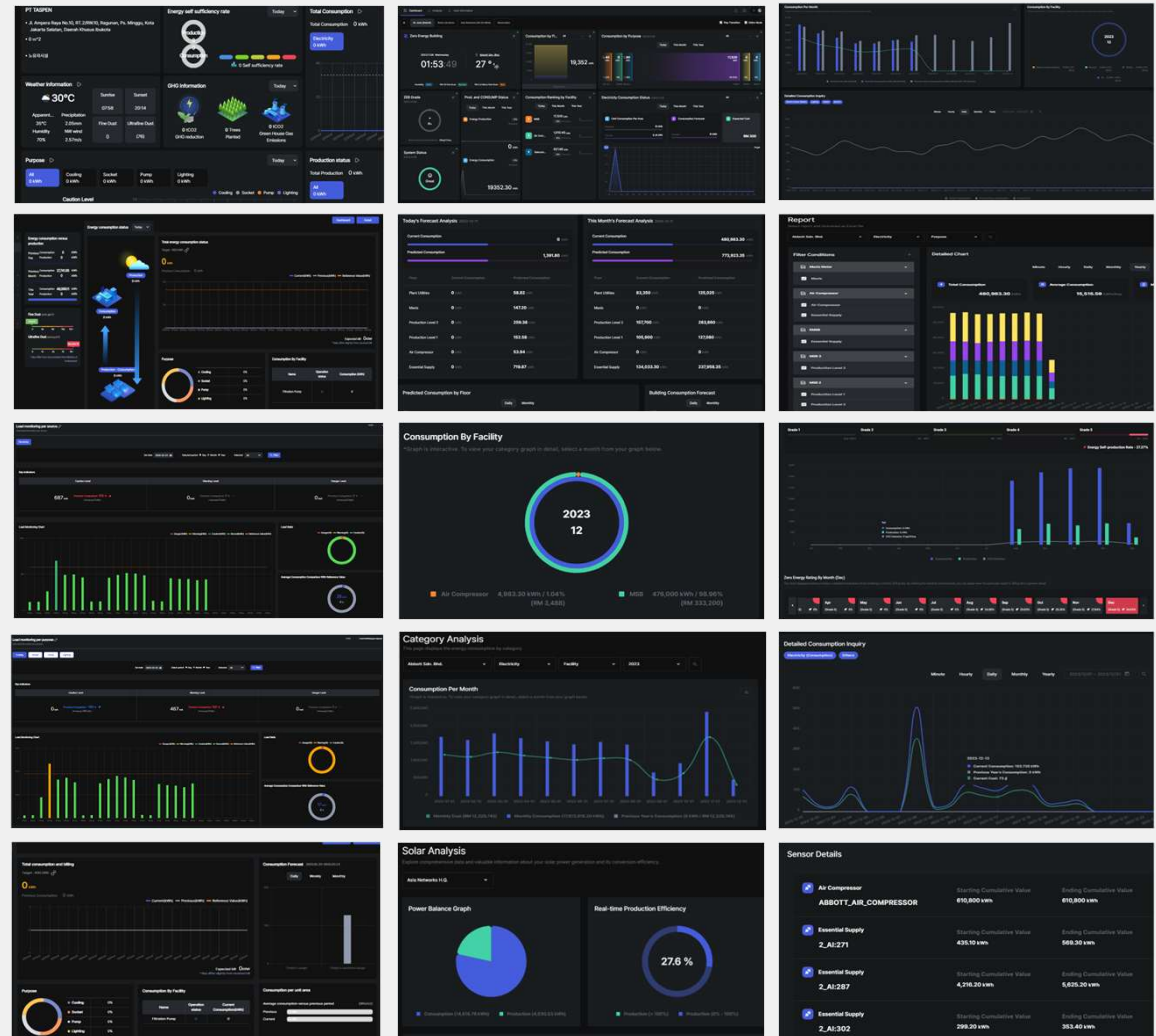
REGULATIONS MONITORING NDC

National Determined Contribution UNFCCC Reporting

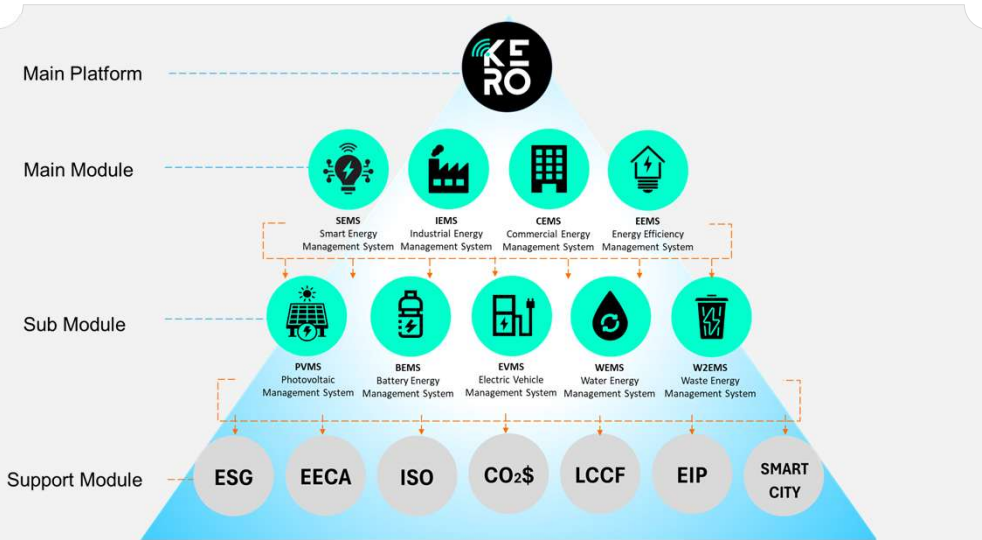


KERO delivers a unified **Energy + Digital Transformation (DX)** platform that combines real-time IIoT monitoring, cloud-based SaaS/EaaS management, and AI-driven analytics to help businesses reduce energy costs, optimize operations, and achieve sustainability goals. With integrated systems covering SEMS, CEMS, IEMS, EEMS, PVMS, BEMS, EVMS, WEMS and WE2MS, KERO provides a complete end-to-end energy ecosystem supported by built-in compliance for EECA, ISO, ESG, CO₂, LCCF, NDC and UNFCCC reporting—empowering organizations to operate smarter, cleaner and fully compliant.

OPEN API (High Level) Energy Management Platform



Centralize and High-Level Cloud based integrated system, allows real-time data to be placed as widgets, supports input from various data sources with open API and was developed with the goal of outputting auditable energy data reports and to meet the government regulations and certifications.



KERO is an integrated digital energy platform that unifies industrial, commercial, and efficiency management systems into one intelligent ecosystem. KERO enables seamless monitoring, optimization, and automation across all facility operations, helping organizations reduce costs, enhance sustainability performance, and accelerate their transition into data-driven, low-carbon operations.

Main Features

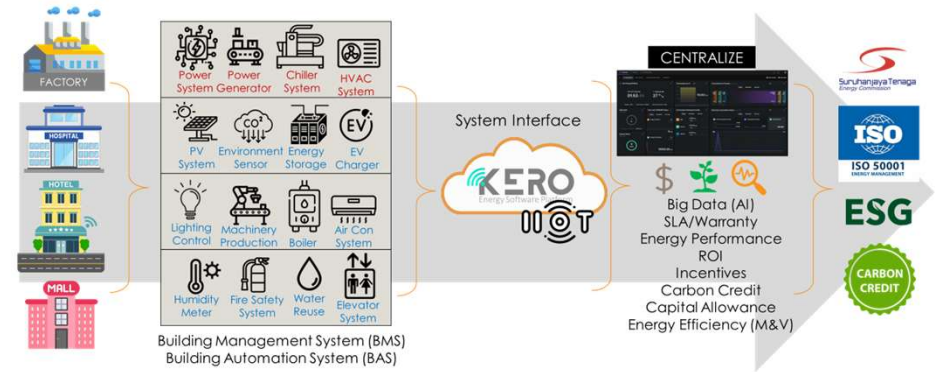
- | | | |
|------------------|-------------------|---------------------|
| Interlocking | Saving & recovery | Economic efficiency |
| Analysis & Alarm | Multi-Device | Periodic use |
| Monitoring | Record | Multi Location |
| Demand Alert | Search Engine | Energy Planning |

Reporting & Compliance Report

- Environmental, Social & Governance Reporting
- Energy Efficiency & Conservation Act 2024 Reporting
- International Organization Standard 50001 Energy Management Reporting
- Low Carbon City Framework Reporting
- Eco Industrial Park Reporting
- Smart City Management Reporting
- Carbon Credit Offset Calculation

System Input & Output

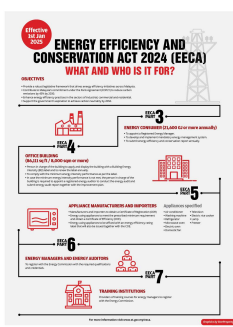
KERO integrates all major commercial and industrial systems including power, chiller, HVAC, PV, energy storage, EV chargers, production machinery, lighting, fire safety, water systems and more—into a single intelligent Energy Software Platform. Through seamless BMS/BAS connectivity, KERO centralizes real-time data, AI-driven analytics, energy performance tracking, ROI reporting, and compliance requirements such as ISO 50001, ESG, ST regulations, and carbon credit frameworks. This unified interface helps factories, hospitals, hotels, and malls enhance operational efficiency, unlock incentives, optimize energy usage, and meet modern sustainability standards.



This framework outlines a complete pathway to smarter energy management, starting with regular **energy audits** to uncover inefficiencies, followed by **process optimization** to reduce waste and streamline operations. Organisations then **improve energy efficiency** by upgrading equipment, lighting, HVAC systems and machinery, while continuous **monitoring and verification** ensure performance, compliance, and documented measurement. Finally, **AI, RPA and Digital Twin technologies** automate routine tasks, enhance analysis, and create intelligent, data-driven operations for long-term sustainability and cost savings.

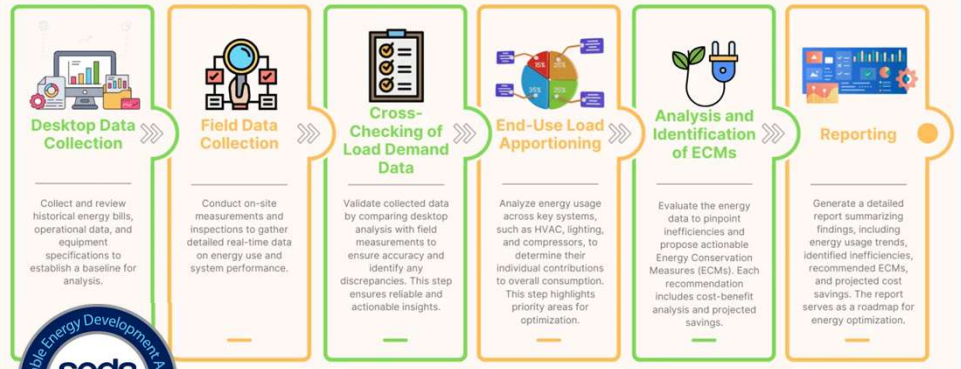


Energy Efficiency Conversation Regulation 2024 (EECR) for EECA includes;



DOCUMENT	TARGET					
	Energy Consumer	Person in Charge of a Building	Manufacturer/ Importer	Energy Manager	Energy Auditor	Training Institution
Guidelines on Ascertaining Energy Consumer	X					
Guidelines on Function and Duties of REM	X			X		
Guidelines on Energy Management System (EnMS)	X			X		
Guidelines on Energy Efficiency and Conservation Report	X	X		X		
Guidelines on Ascertaining Building and Energy Intensity Performance of The Building		X				
Guidelines on Energy Audit Report	X	X			X	
Guidelines on Energy Using Product			X			
Guide on Registration of Energy Manager				X		
Guide on Registration of Energy Auditor					X	
Guide on Registration of Training Institution						X

<https://www.st.gov.my/contents/2025/EECA/GUIDELINES.pdf>



Detailed Energy Audit Process



Solutions Digital Energy Management System (EnMS) Software

Services Kero Software's Energy Management System (EnMS) is designed in accordance with Suruhanjaya Tenaga's EECA 2024 Guidelines, providing a structured, auditable, and compliant system that enables organizations to meet mandatory energy management, reporting, and submission requirements—helping clients achieve regulatory compliance efficiently and **avoid heavy penalties under the Electricity Supply Act.**



Industry

Mission

MANUFACTURING SECTORS

(Highest energy consumers – EMP is critical)

- Electronics & Semiconductor
- Automotive & Component Manufacturing
- Steel, Metal & Foundries
- Glass & Ceramics
- Plastics & Rubber
- Paper & Pulp
- Textile & Garment

PROCESS & HEAVY INDUSTRY

- Chemical Plants
- Petrochemical Plants
- Oil Refineries
- Fertilizer Plants
- Industrial Gas Production
- Battery & EV Manufacturing
- Mining & Mineral Processing

OIL, GAS & ENERGY SECTOR

- Upstream Oil & Gas Facilities
- LNG Plants
- Terminals & Tank Farms
- Refineries
- Offshore Platforms
- Power Plants (Gas, Coal, Biomass)
- Renewable Energy Operators (Solar, Hydro, Wind)

COMMERCIAL SECTOR

- Office Towers
- Shopping Malls
- Mixed-Use Developments
- Commercial Complexes
- Business Parks
- Co-working Spaces

HOSPITALITY & LEISURE

- Hotels & Resorts
- Convention Centers
- Theme Parks
- Casinos & Entertainment Complexes

HEALTHCARE

(Energy reliability + compliance critical)

- Hospitals
- Medical Centers
- Pharmaceutical Manufacturing
- Laboratories & Research Facilities

EDUCATION

- Universities & Colleges
- Schools & Campuses
- Research Institutes
- Training Centers

DATA, DIGITAL & TELECOMMUNICATIONS

(Energy = uptime)

- Data Centers
- Cloud Service Providers
- Telecommunication Towers
- Network Operation Centers (NOC)
- Broadcasting Facilities

TRANSPORT & INFRASTRUCTURE

- Airports
- Seaports & Harbors
- Railways & MRT Systems
- Bus Depots
- Logistics Hubs & Warehouses
- Cold Storage Facilities

FOOD & AGRICULTURE

- Food & Beverage Manufacturing
- Cold Rooms & Warehouses
- Dairy Processing
- Slaughterhouses
- Agro-processing Plants
- Palm Oil Mills
- Rice & Grain Mills

PLANTATIONS & RESOURCES

- Palm Oil Estates
- Aquaculture Farms
- Greenhouse Operations

GOVERNMENT SECTOR

- Government Buildings
- Municipal Facilities
- Public Utilities
- Water Treatment Plants
- Wastewater Treatment Plants
- Military Facilities

INDUSTRIAL PARKS

(Multi-tenant energy visibility needed)

- Industrial Parks
- Free Trade Zones
- Science Parks
- Technology Parks
- Smart Cities

ENVIRONMENTAL & SUSTAINABILITY SECTORS

- Waste-to-Energy Plants
- Recycling Facilities
- ESG-driven Corporations
- Carbon Credit Projects
- Green Building Developments

Cloud & Local Hybrid Environment



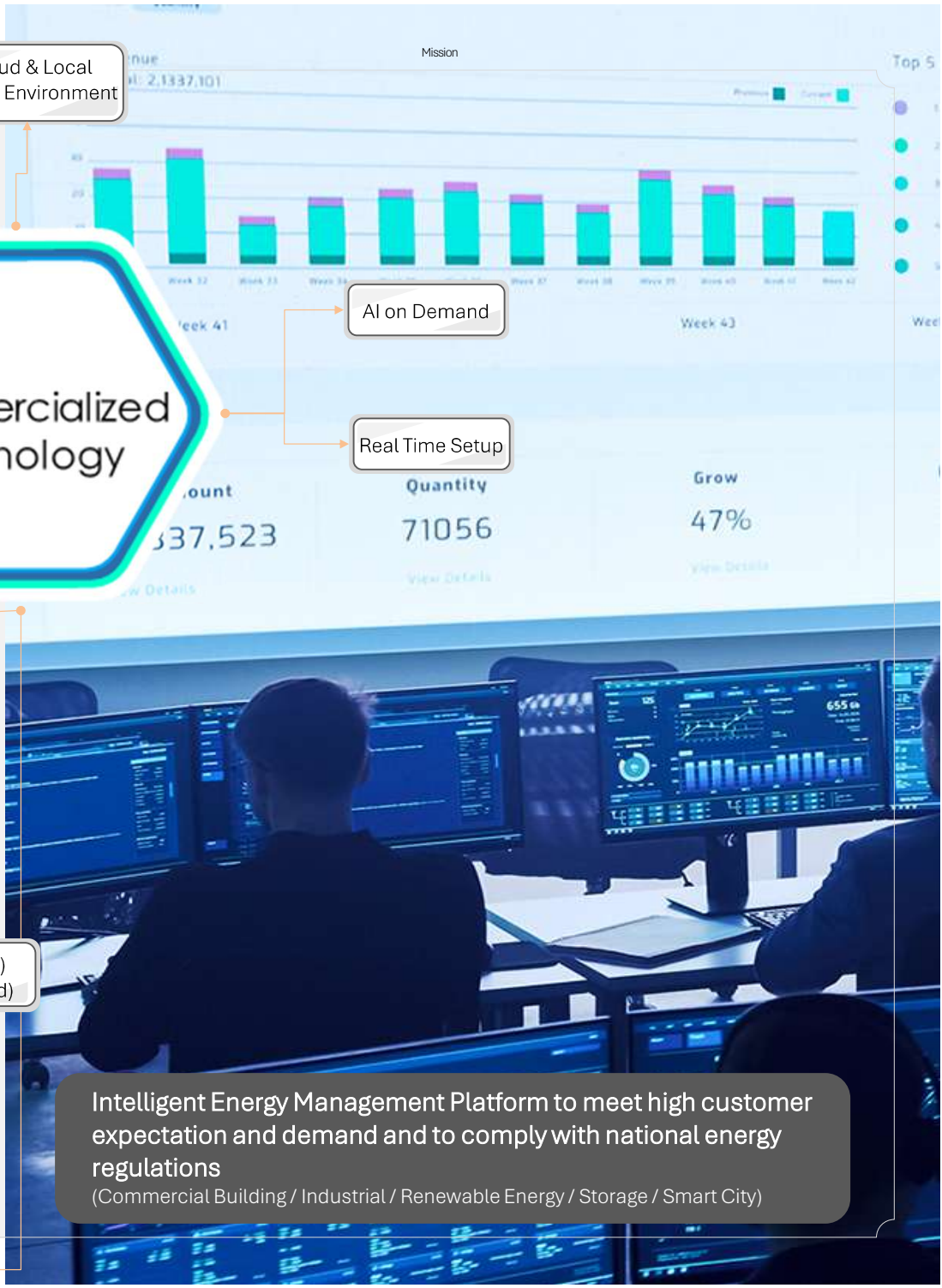
AI on Demand

Real Time Setup

Digital Twin (BAS) (High Value Added)



EMS on SaaS



Intelligent Energy Management Platform to meet high customer expectation and demand and to comply with national energy regulations
 (Commercial Building / Industrial / Renewable Energy / Storage / Smart City)